

# Federal Republic of Germany

Population:  
approx. **82 m**

Area:  
**357,104 sq.**  
km



# Organisation of the German Police

## **Fundamental Principle:**

The Federal States (Länder)  
are in charge of police matters

## **Exceptions:**

Federal Criminal Police Office  
(Bundeskriminalamt)

Federal Police (Bundespolizei)

# Locations



Meckenho  
m



Wiesbaden



BKA

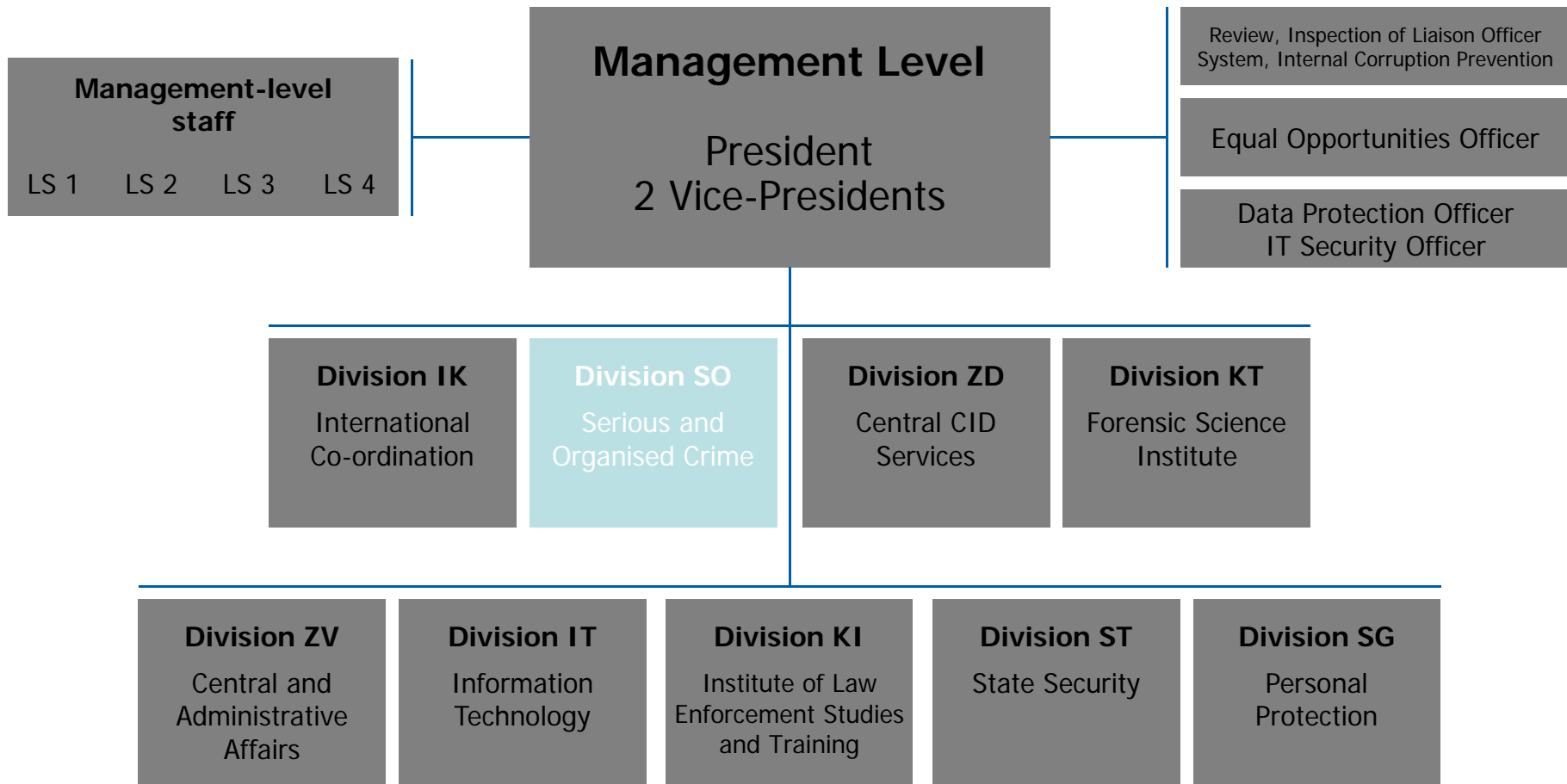
BKA

BKA

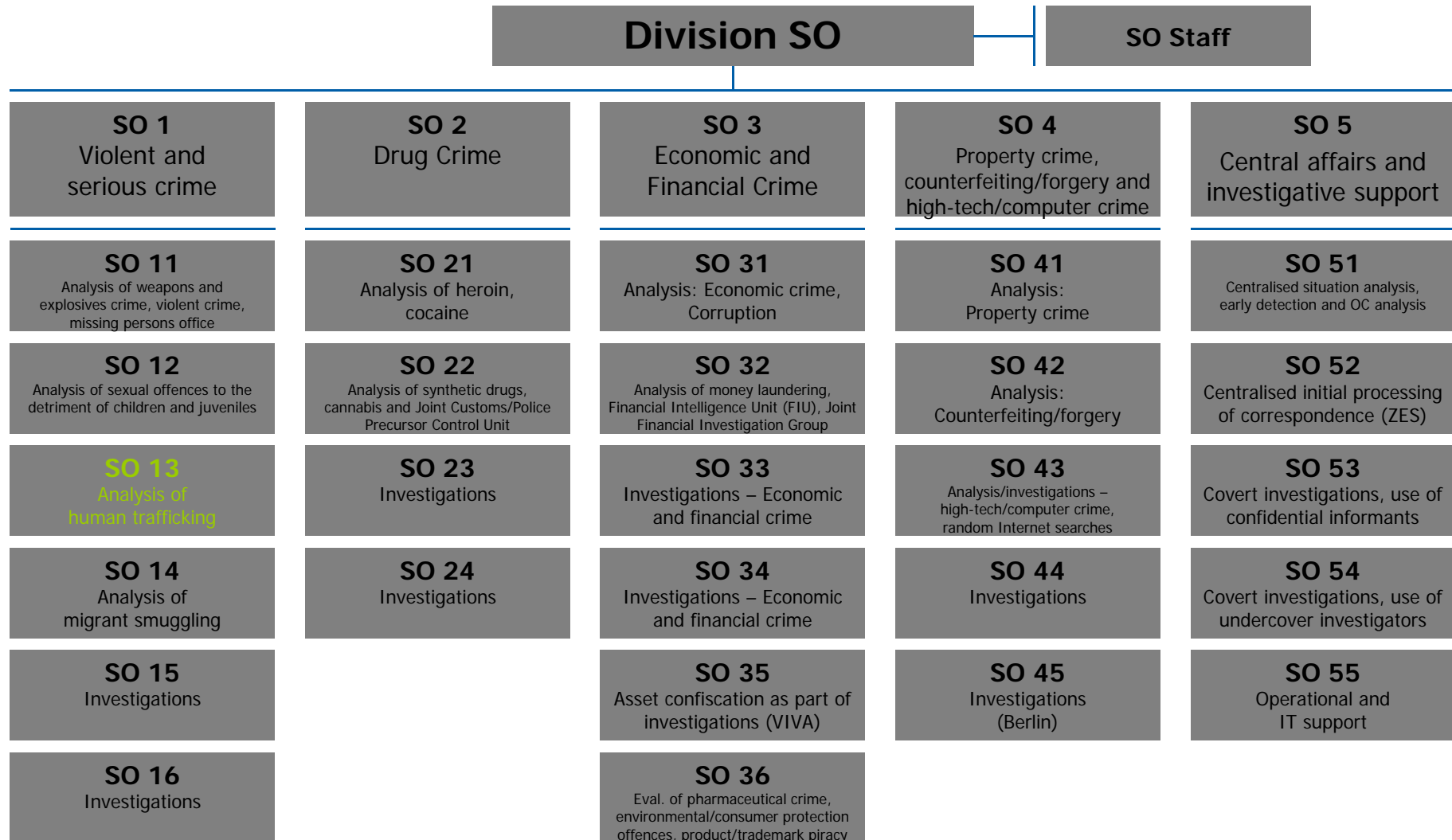


Berlin

# Organisation



# Serious and Organised Crime



# Functions

## Central Agency

- Collection and analysis of information
- Routing of information
- Electronic data network
- Identification service
- Forensic science
- Monitoring and analysis of crime trends
- Crime statistics
- Research
- Further training
- Preparation of expert opinions

# Functions

## International Co-operation

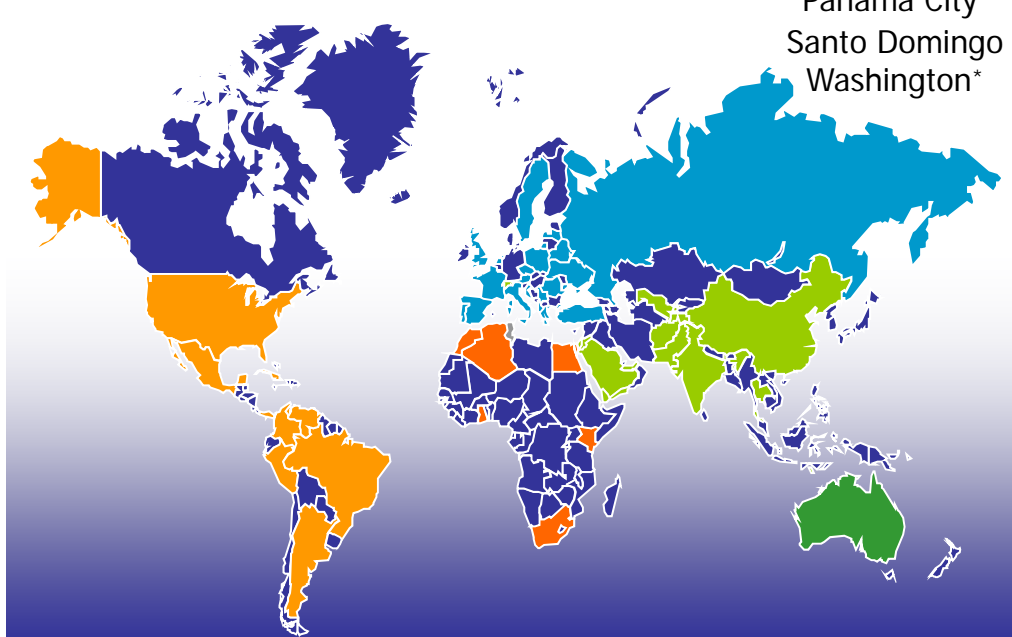


- National Central Bureau of ICPO-Interpol
- Official relations with foreign police forces and judicial authorities, legal assistance
- Europol National Unit (ENU) Germany (Europol Convention)
- National central office (SIRENE) for Schengen Information System searches (Convention Applying the Schengen Agreement)
- Liaison officers



# Bundeskriminalamt Liaison Officers

65 Liaison officers  
 53 Locations  
 50 Countries  
 88 Additional responsibilities



## America

Bogotá\*  
 Brasilia  
 Buenos Aires  
 Caracas  
 Lima  
 Mexico City  
 Panama City  
 Santo Domingo  
 Washington\*

## Europe

Ankara	Moscow*
Athens	Paris*
Belgrade	Prague
Bucharest*	Pristina
Gdansk	Riga
The Hague	Rome*
Istanbul	Sofia
Kiev	Stockholm
Lisbon	Tirana
London*	Warsaw*
Madrid*	Vienna
Minsk	Zagreb

## Asien

Abu Dhabi  
 Amman  
 Bangkok\*  
 Beirut  
 Dushanbe  
 Islamabad  
 Kabul\*  
 Kundus\*  
 New Delhi  
 Riad  
 Beijing  
 Sanaa  
 Tashkent

## Africa

Accra  
 Algiers  
 Cairo  
 Nairobi  
 Pretoria  
 Rabat

## Australia

Canberra

\* 2 officers